



128 Schollum Road Matakana

Captivating Panorama

A stunning piece of land, 1.6190 ha, with beautiful sea views from every angle which encompassing Omaha Bay, Kawau Bay and the rest of the Hauraki Gulf. Your new home will capture the lovely rolling land in front of you with ponies, sheep or cows grazing and that magnificent vista in the background.

The building site is within easy access and there is a cattle yard and old barn behind it.

The gentle contour of the land makes it easy to wander around and you will love exploring a boundary corner with beautiful old trees, Puriri and natives and your own small waterfall in winter.

Only minutes drive from Matakana boutiques, vineyards and art galleries and easy access to Whangateau Harbour and Matheson Bay for a quick swim.

This newly released title might just be what you have been looking for all along.

Area: 1.62ha

FOR SALE

Sold

VIEW

[ljhooker.co.nz/BKAHAY](https://www.ljhooker.co.nz/BKAHAY)

CONTACT

Marie-Dominique Lennan 021 490 039

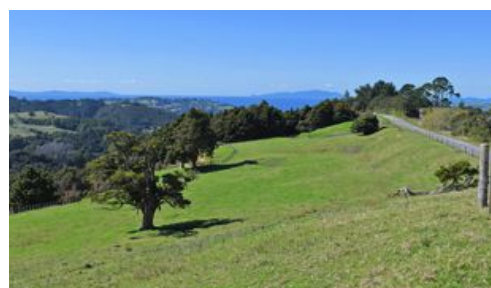
LJ HOOKER WARKWORTH

(09) 425 8589

More About this Property

PROPERTY ID	BKAHAY
PROPERTY TYPE	Vacantland
AREA	1.62 ha
TYPE	Residential

Licensed Real Estate Agents (REAA2008)



LJ Hooker Warkworth - Broadbents 2001 Ltd

CONTACT: Marie-Dominique Lennan
EMAIL: mlennan.warkworth@ljh.co.nz
MOBILE: 021 490 039

PHONE: (09) 425 8589
FAX: (09) 425 9002

DISCLAIMER

The above information has been furnished to us by the Vendor. We have not verified whether or not that information is accurate and do not have any belief one way or the other in its accuracy. We do not accept any responsibility to any person for its accuracy and do no more than pass it on. All interested parties should make and rely upon their own enquiries in order to determine whether or not this information is in fact accurate.



www.ljhland.co.nz

Residential | Commercial | Rural | Land Sections | Coastal